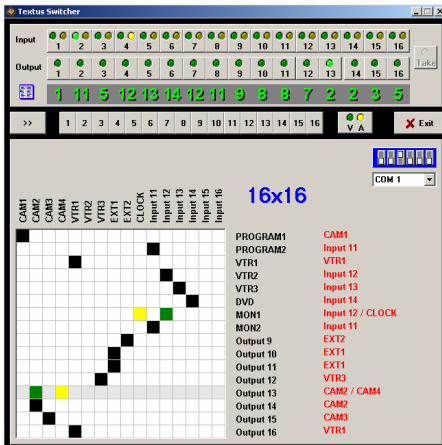


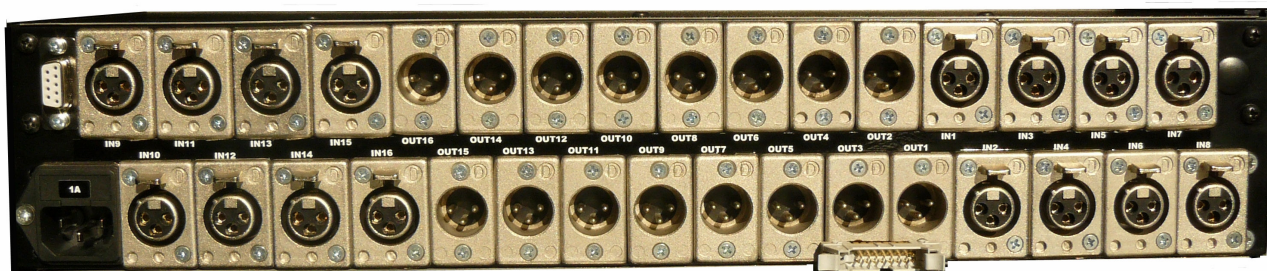
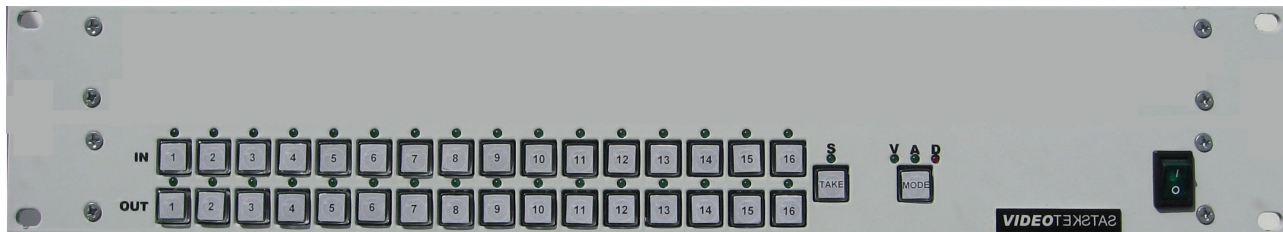
BALANCED ANALOG AUDIO 16x16 MATRIX SWITCHER VM614

Audio matrix VM614 switches 16 inputs signals to 16 outputs. It is possible to use two switching modes – either simply pressing any source key or using *TAKE* button. Switcher allows to connect remote control panels (19", 1U) and computer, which controls every output line. Remote control software for Windows is included. Multiplying matrix switcher by layers is also available. For switching video and audio signals at the same time (*AUDIO FOLLOW VIDEO*), layers of audio and video matrix switchers can be used. In that case both switchers are controlled by any button, related to any source. Video and audio sources can be separated. Statuses of the buttons are memorised (turning power off/on does not influence the state of the matrix). Front panel buttons are illuminated by back green light. Unique function – after turning power off input *IN1* is automatically switched to output *OUT1*. This feature passes-through input signal to output without power supply. Special customer marks for each key can be inserted under the cap.



Switching in different modes is supported: 16x16 mono, 8x8 stereo, 4x4 quadro. Matrix switcher can be also configured as 16 inputs to 2 outputs (16x2) unit with 8 XLR connectors for each output.

The only alone 19" 2U 16x16 audio matrix switcher with XLR connectors for balanced audio in the market.



Technical specifications:

Inputs:	16 balanced on XLR connectors
Outputs:	16 balanced on XLR connectors
Crosstalk gain:	-80dB
Max signal level:	24 Vpp ($\pm 12V$ output swing)
Audio S/N:	-80dB
THD:	0,02%
Control from:	front panel, remote control panel, computer
Power:	$\sim 220V, 6VA$
Dimensions:	483x88x150mm (19", 2U)
Weight:	3,0 kg

Vilnius g. 215/15, Šiauliai LT-76348, Lithuania

www.textus.lt

E-mail: info@textus.lt

Tel: +37041-525930

Fax: +37041-525930