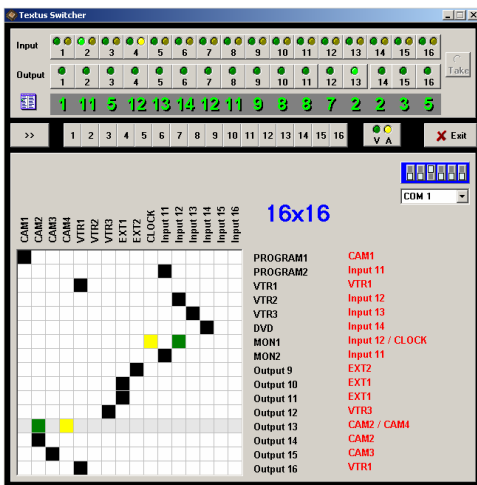


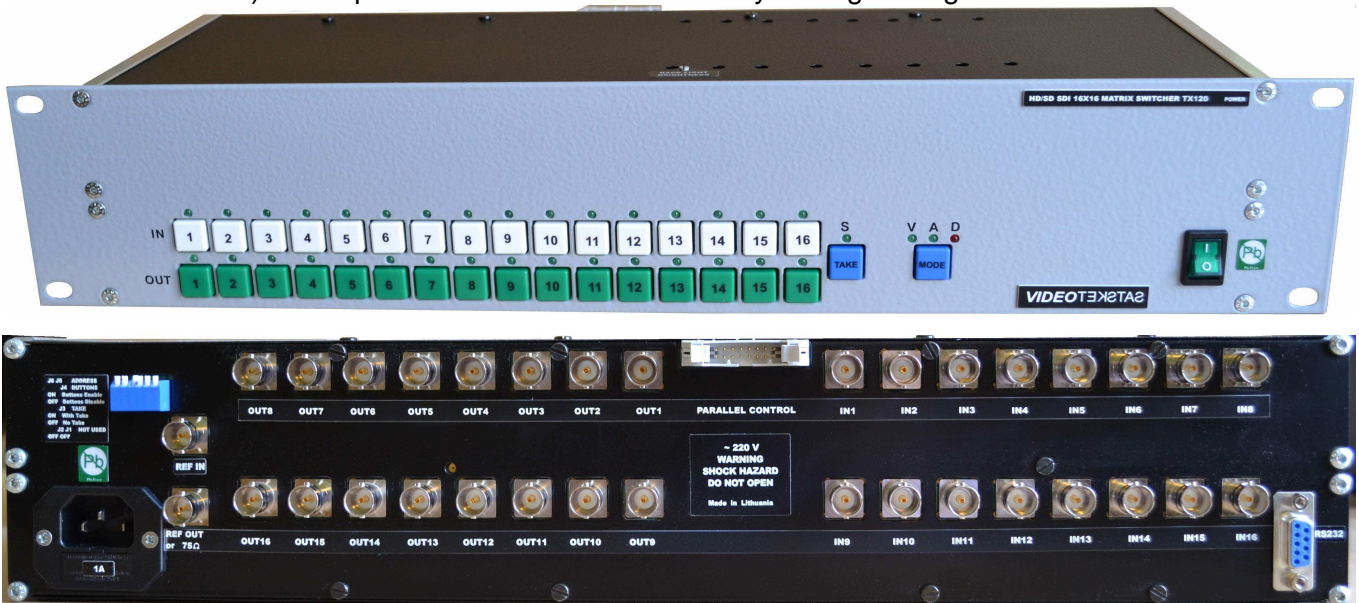
VIDEOTEKETA2

HD/SD SDI, ASI 16x16 MATRIX SWITCHER VM120



Matrix VM120 switches 16 input signals to 16 outputs. Reference input provides clean switching in vertical blanking interval. All inputs are equalized (allow to compensate long cable losses) and all outputs - reclocked. Embedded audio passes-through as well. It is possible to use two switching modes – either simply pressing any source key or using *TAKE* button. Switcher allows to connect remote control panels (19", 1U) and computer, which controls every output line. Remote control software for Windows is included. Switcher also offers a possibility to disable front panel buttons. In that case control comes from remote control panels and computer. For switching video and audio signals at the same time (*AUDIO FOLLOW VIDEO*), layers of audio and video matrix switchers can be used. In that case both switchers are controlled by any button, related to any source.

Video and audio sources can be separated. Special customer marks for each key can be inserted under the cap. Statuses of the buttons are memorised (turning power off/on does not influence the state of the matrix). Front panel buttons are illuminated by back green light.



Technical specifications:

Inputs:

16 equalized SMPTE-292M/259M/344M on BNC connectors
1 reference (Black Burst or tri-level sync) on BNC with loop-through connector and 75Ω load on/off

Outputs:

16 reclocked SMPTE-292M/259M/344M on BNC connectors

Cable length equalizing:

SD SDI – up to 340m
HD SDI – up to 120m

Standard control:

auto

Switching:

in vertical blanking interval (with reference signal)

Control from:

front panel, remote control panel, computer

Power:

~220V, 20VA

Dimensions:

483x88x150mm (19", 2U)

Weight:

2,5 kg

Vilnius g. 215/15, Šiauliai LT-76348, Lithuania

www.textus.lt

E-mail: info@textus.lt

Tel: +37041-525930

Fax: +37041-525930