

VIDEO TEXTUS

Crawl line system TEXTUS CRAWL LINE (HD/SD SDI, PAL, YUV)

TEXTUS CRAWL LINE system provides cost effective solution when only crawling lines are required. It is possible to go on air with unlimited amount of crawling lines at the same time.

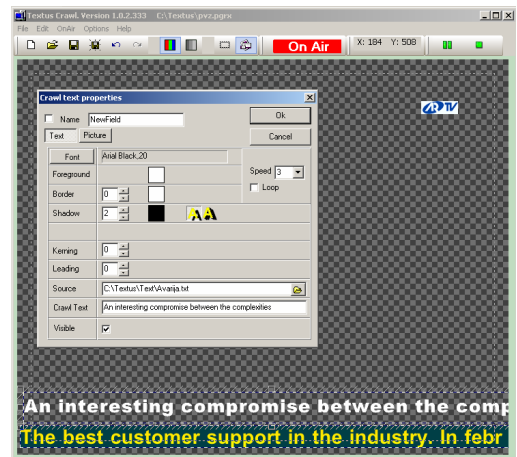


Crawling lines can be positioned anywhere on the screen. Length of the crawling lines is unlimited - from several pixels to 720 (SD) or 1980 pixels (HD). Each crawling line can be of different font, size, character attributes, line's background and speed. Monochrome color, color gradient, graphic picture or animated video can be used as crawling line background. Line without background is available as well. You can choose any out of eight crawling speeds. Additional graphic pictures can be composed with crawling lines, e.g. logo, advertisement...

Digital

clock is also available on the air together with crawling lines. All crawling lines projects are saved as templates files. Crawling text information is taken directly from the simple text file. Graphic pictures (usually as info separator) can be inserted into the crawling line. Text looping function is included. It is available to use GPI input to turn off all of the crawling lines by external device.

TEXTUS CRAWL LINE system can operate as source for video switcher (DSK FILL, DSK KEY output signals) or as crawling lines inserter into the video signal. BYPASS function when computer is turned off is available as well. External mixer fader also allows to control manually title mixing level and BYPASS function. Moreover, crawling lines can be played together with audio signals.



Technical specifications:

Operating system:	Windows 7, Windows XP
Graphic board:	DecLink Extreme, Studio, SDI
Graphic resolution:	24 bit
Alpha channel:	8 bit
Inputs:	HD/ SD SDI, PAL, SVHS, YUV, Reference
Outputs:	HD/ SD SDI, PAL, SVHS, YUV, DSK FILL, DSK KEY, PREVIEW, audio
BYPASS function:	yes
External mixer fader:	yes
Loop function:	yes
Digital clock:	yes
Crawl lines position:	anywhere on the screen
Crawl lines speed:	8 different for each crawl line
Fonts:	TRUE TYPE
Fonts attributes:	italic, border, shadow, outline
Crawl lines background:	monochrome, color gradient, graphic picture, animated picture
Graphic pictures formats:	.tga, .jpg, .png, .psd, .bmp
Animated video formats:	.tga, .avi

Vilnius g. 215/15, Šiauliai LT-76348, Lithuania

www.textus.lt

E-mail: info@textus.lt

Tel: +37041-525930

Fax: +37041-525930